

SMALL WORLD

CULTURAL ARTS COLLECTIVE



annual report
2012-2013



APRIL 2012 and the start of another year of Small World . The Creative Writing project, Big Art & the NEETs project all continued to give young people access to creative arts in Keighley. With community work through Postcards of Keighley and Holycroft primary school and the excellent Tea in the Park.



The venue continues to develop with bands and world music events and researching the opportunities it offers for training for young people and running it as a social enterprise.

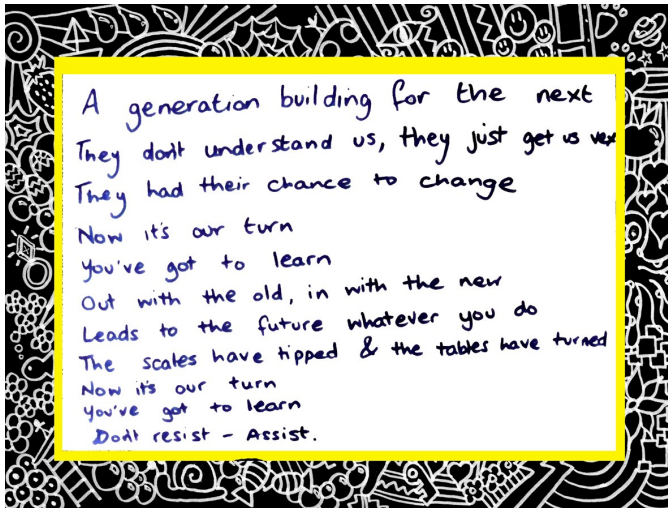


We also had the addition of the Life Support project to support young people with additional needs and welcomed Chloe on board for both Life Support and Big Art.

A difficult year for funding but with over 200 a week accessing services, still a definite need for it. With both Creative Writing and NEETs ending in 2013, developing new ideas for income generation is a priority if we are to reach a level of sustainability.

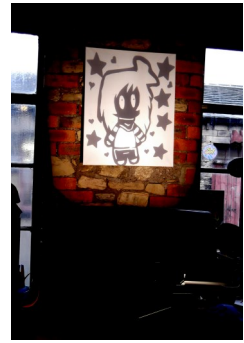
OUR AIMS FOR YOUNG PEOPLE UNDER 25 IN KEIGHLEY

- Advancing their education and development by providing and promoting a broad range of sustained, participatory, creative arts activities;
- Promoting the arts in particular by the establishment and maintenance of a Community Arts and Music Centre;
- Developing their capacity and skills in such a way that they are better able to identify, and help meet, their needs and to participate more fully in society; and
- Promoting for their benefit the provision of facilities for recreation or other leisure time occupation in the interests of social welfare and with the object of improving their condition of life.



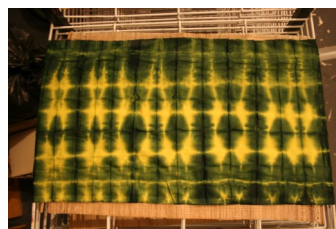
2012	april	may	june	july	august	september	october	november	december	january	february	march
Creative Writing												
NEETs												
Big Art												
Saturday Club												
Rock Band												
Life Support												
Holycroft												
SkillShare												
Drumming												

PROJECTS



CREATIVE WRITING

Cherita and Gemmas excellent support programme for young women still providing breakthroughs with engagement, behaviour and development for some of the most disengaged school age participants



NEETS

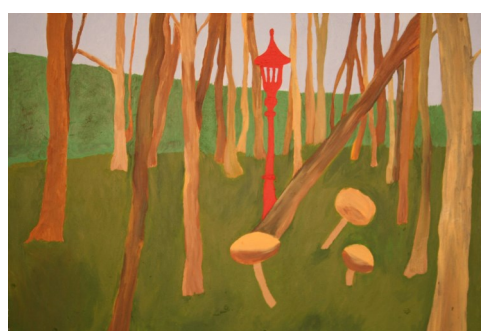
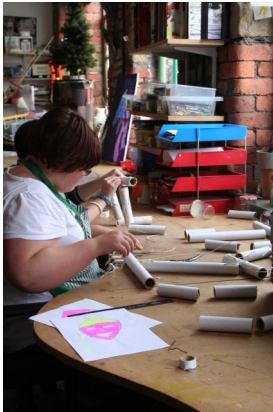
Originally set up for young people who struggle to access mainstream education the focus of the project was shifted to young people with additional needs.

We have worked across a variety of artistic mediums such as craft making, model making, painting and drawing, jewellery making and textiles as well as developing interpersonal skills such as team building, relationships and family relationships.



BIG ART

Continuing the out of school sessions ably taken over by Chloe Jarvis to provide a range of creative arts and the opportunity to work with professional artists—with filmmaking and carnival arts on the menu



POSTCARDS OF KEIGHLEY

This epic project run by artist Chrissie Scott is now finished and we look forward to seeing the next showing of all 94 paintings

LIFE SUPPORT

The Life Support project began in September 2012 after the necessity for 1 to 1 support for young people with additional needs was highlighted through the NEET project. This involved supporting young people with additional needs to access health care, housing and benefits.

Due to the nature of the project and the young people we are reaching it became clear that we would need two separate groups; LS1: young people with additional needs that require 1 to 1 support and LS2: young people with profound and multiple learning disabilities.

..MORE

**TEA IN THE PARK AND ARTWORK
DISPLAYED AT THE AGM FROM
ALL THE PROJECTS**





PEOPLE

STAFF

Sam Atkins - Creative Director

Cherita Wood - Project Worker; Creative Writing

Gemma Hobbs - Support Worker; Creative Writing

Chrissie Scott - Support Worker, NEETs

Andi Joy - Project Worker, NEETs / Life Support 2

Chloe Jarvis - Project Worker, Big Art / Life Support 1



VOLUNTEERS

Anita Gregory

Lazymonk

Christine Scott

Claire Silvester

Danny Scott



COMMITTEE

Gemma Taylor - Chair Person

Gareth Youens - Treasurer

Anita Gregory - Secretary

Flo Toch - Director

Emma Ford - Director

Debbie Houldsworth - Director

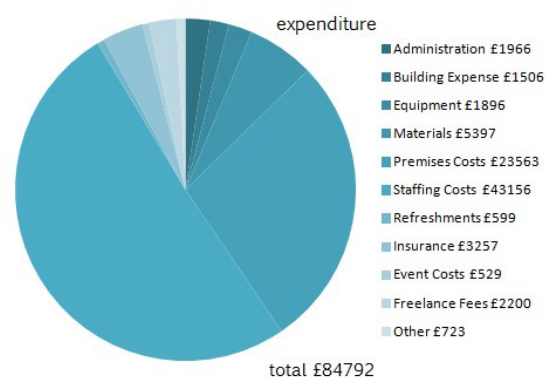
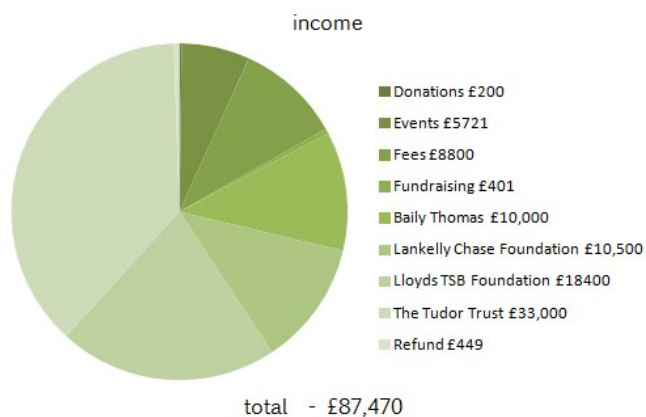


FUNDERS & FINANCE

 Lloyds TSB | Foundation for England and Wales

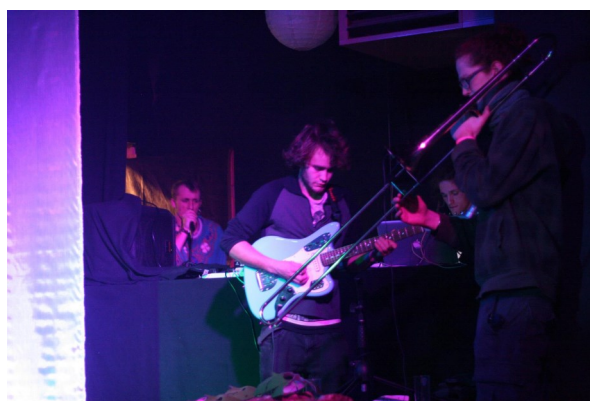
Lankelly
chase

the
Tudortrust



VENUE

The first year of running ground floor as a venue to generate income for Small World and provide a platform for developing musicians bands and producers as well as providing training opportunities for young people



SMALL WORLD

CULTURAL ARTS COLLECTIVE

SMALLWORLD CP
20 RUSSELL STREET
KEIGHLEY
BD21 2JP

www.smallworldkeighley.org

Tel: 01535 663285

Mobile: 07834181491

Email: ask@smallworldkeighley.org

Registered Charity - 1109457

Limited Company - 4984522

Info Videos available at:

<http://www.youtube.com/watch?v=6TTHDoWuF6Y>

&

<http://www.youtube.com/watch?v=oZ9jCmrFG2k&feature=plcp>

SMALL World
CULTURAL ARTS COLLECTIVE

